

EAST 15
ACTING SCHOOL

MAP FEST 2020



'ONLINE' SUMMER SEASON
[EMAIL US](#) TO JOIN THE AUDIENCE



MA ACTING PRESENTS

MAP FEST

DEvised & CONCEIVED BY THE COMPANIES

The first iteration of twenty-nine new pieces of work created under extraordinary circumstances.

East 15's MA Acting cohort share the green shoots of exciting new work.

These entirely original pieces have been created by MA actors working solo and in ensemble companies over an intensive three weeks.

The work spans a range of genres, including new writing, puppetry, audio, film, filmed theatre and other exhilarating ways of messing with media.

'MAP' productions have frequently gone on to win awards at Edinburgh, Brighton and beyond, touring to national and international acclaim.

** 16+. May contain themes and language of an adult nature which some may find offensive.*

FESTIVAL MANAGERS

Andrea Brooks, MA Acting Course Leader
Louise Amos

WITH PROFOUND THANKS TO MENTORS

Matthias Ashford
Gemma Brockis
Peter Coxell
Sean Garrett
Ed Harris
Madeleine Joyce
Christina Kapadocha



JOURNEY

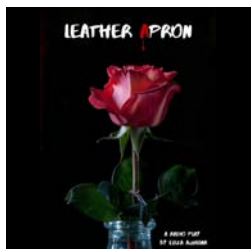
When I first experienced panic attacks and anxiety what I remember most is the feeling of loneliness.

1 in 13 people experience anxiety, and it took me years to realise that I wasn't alone. This is my journey of finding my grounding. Adapting.

CAST



EMILY ROGERS



LEATHER APRON

There are those you can trust and those you can't. But, who is who?

My brother and I moved to London for a better life. However, a killer is murdering prostitutes right outside our doorstep. He tells me: "he is too clever for them". Is he right? Am I his next victim?

CAST



ELIZA AQUILINA



EARTH

Let us tell you a story...

Imagine a world created by the great mother, bestowed to guardians equipped with gifts to safeguard the planet for all who live there. But what happens when those who are never satisfied take control? Will they heed the warnings? Is this the final chapter?

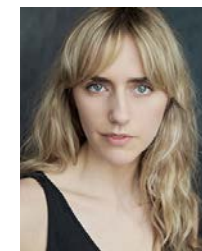
CAST



MADELEINE GORDON



ROWLAND. D. HILL



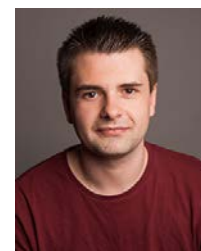
ROOSJE WATSON



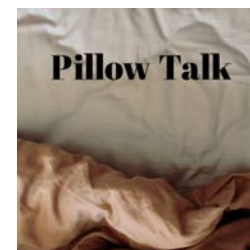
ISABELLE WOOLLEY



LIZZIE WOOTTEN



DANIEL WYATT



PILLOW TALK

Two strangers wake up together, only to discover that the world has completely changed overnight.

What happens when you are forced to spend time with someone you never intended to?

CAST



HOLLY MCCOMISH



SIMON SWEENEY



THE LIFE OF OLU

A one man play.

Olu is an awkward, anxious 17-year-old, born and raised in North West London.

Olu has a lot of dreams: he wants to marry his crush Karina, move out of his area, and go to Oxford to become a writer. Which one of his dreams will he achieve?

CAST



TEMI MAJEKODUNMI



UNNAMED

What's expected of a father? How anxious and scared are you really?

Do you even know if you can conceive? Are you ever ready to be a father? Are you finally complete when you become a father? A lot of questions but do you ever find the answers.

CAST



VERONICA GRENVILLE



FREDDIE GRIGGS



ELIZABETH HALPIN



KAROLINA POVILAITYTĖ



FIVE

Love means different things, it is infinite and fluid. It is as complex as the people who encounter it.

A glimpse into the complicated lives of five people navigating tempestuous relationships.

Love - what is your definition?
Five people. Five stories. One common thread.

CAST



LYNN MCELROY



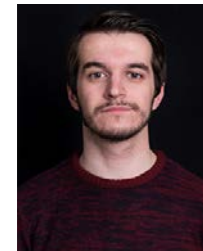
TEMI MAJEKODUNMI



LEWIS MOORE



LEILANI RODGERS



SEBASTIAN ROMANIUK

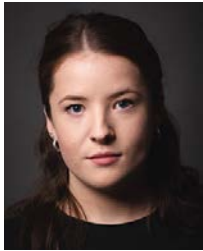


STRINGS OR BARS

In the wake of a global pandemic what happens to the most vulnerable in our society?

Who pulls the strings?

CAST



BETHANY DENHAM



HARRIET GANDY



TANCRÈDE HOLLINGTON



JOSHUA PRICE



DREW RAFTON



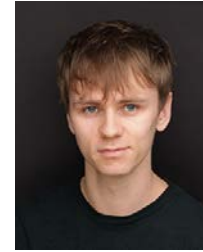
SYMPHONY OF THE PIT

Deep beneath the earth they worked only to have their jobs and lively hoods ripped away from them.

CAST



ELIZA AQUILINA



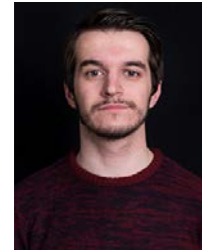
FREDDIE GRIGGS



JULIET IBBERSON



JOSHUA PRICE



SEBASTIAN ROMANIUK



THE GREAT WALL OF ENGLAND

In response to long standing social and economic differences between the North and South of the UK, amongst an ongoing pandemic outbreak, a substantial wall was built to divide the North and South of England in 2025.

Now ten years on, a documentary sets out to capture its impact.

CAST



CHRIS FORTE



JOSEPH GALLOGLY



ELIZABETH HALPIN



ROWLAND D. HILL



JULIET IBBERSON



HOLLY MCCOMISH



ONLY IN IT FOR THE VALIDATION

As a wise woman once sang 'tell me what you want, what you really, really want', we really want you to answer, because we are desperate to please.

Exploring why we need validation so much, we look upon our cultural heritages and modern society to maybe, discover what we want.

CAST



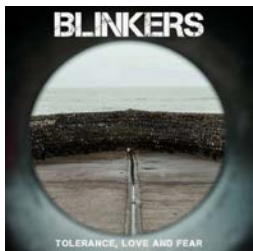
OLGA ALAJAASKO



ELIZABETH HALPIN



ROSELYN LOVE



BLINKERS

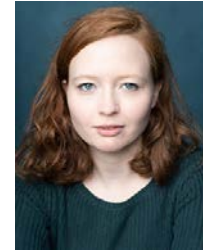
How tolerant should we be of intolerance? When does tolerance become acceptance? Can people change their views of those from different cultures / political ideologies / sexualities?

An exploration of love vs fear and the human condition.

CAST



JOSEPH GALLOGLY



AMY GILBROOK



LAWRENCE HARP



NARCISSUS

An amateur filmmaker discovers a series of disturbing tapes.

He soon learns that there are some things in this world that are best left forgotten.

Will you be able to look away?

CAST



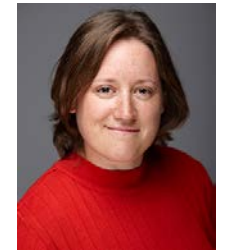
CHRIS FORTE



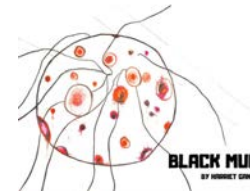
BETHANY MONK-LANE



LEWIS MOORE



EMILY ROGERS



BLACK MUD

In this modern world we are constantly seeking answers. What happens when our sight is lost, our hearing impaired and all we have is a quilt to cover ourselves. What then, do we have to rely on?

CAST



HARRIET GANDY



CTRL

Is it easier to take the final step when someone is with you? The dark web is the part of the internet that isn't indexed by search engines- here is where you join us to catch the bus.

CATCHING THE BUS (CTB)

Verb: euphemistic, chiefly internet- to kill oneself deliberately.

CAST



ELLIE-ROSE FOWLER



ROWLAND D. HILL



NADINE KAUR



ROSELYN LOVE



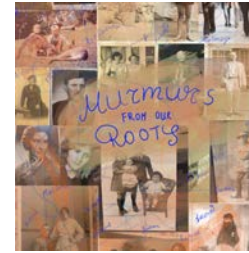
LYNN MCELROY



DREW RAFTON



SIMON SWEENEY



MURMURS OF OUR ROOTS

Bare feet step into murky waters. In the ripples, which flow to and fro like an ancient pulse. The stories new and old, stretching and condensing the identities they hold. Goblins, songs, stories before words. Is home on one shore, or in the water through which we trod?

CAST



VERONICA GRENVILLE



KAROLINA POVILAITYTĖ



ANDREANE RELLOU



FELICITY ROSE



UNTOLD STORIES

Do you know the definition of a terrorist? These are the untold stories of those who fall into the grey area.

CAST



BETHANY DENHAM



TANCRÈDE HOLLINGTON



NADINE KAUR



DIARIES OF A NURSE

Since the outbreak of Coronavirus the nursing profession has received an extraordinary amount of positive media attention and public praise.

Are you curious to know more about the inner life of a nurse?

CAST



ELLIE-ROSE FOWLER



RACINE

Our roots are supposed to define us, but what's the thin boundary between history and stories?

Where do you start looking?

CAST



TANCRÈDE HOLLINGTON



A MINOR GLITCH

What if the worst of humanity was also its saving grace? What if it was only a point of view?

You are in the waiting room for a meeting that could change your life.

Join meeting?

CAST



MADELINE BIGGS



HIBA MEDINA



LEILANI ROGERS



FELICITY ROSE



DANIEL WYATT



SEEDING

There is a subterranean child inside all of us, but in a culture that keeps its children hidden indoors, dare we let them out to play?

IMAGE COPYRIGHT - THE MAGIC FLOWER GAME, DOROTHEA TANNING

CAST



ROOSJE WATSON



HARD-WIRED

In this radio play, we hear from troubled adolescents attending group meetings.

How early can we spot the signs of future criminal behaviour in our children? Can it be prevented, or are some, by nature, destined to kill?

CAST



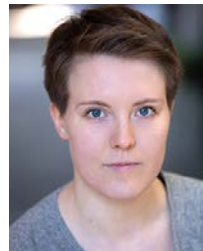
AMY GILBROOK



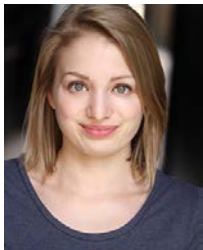
JULIET IBBERSON



HATTIE KEMISH



BETHANY MONK-LANE



ALICE OLIVER



LIFE ON CALL

Who is there to rescue the rescuer? What happens to someone when they're exposed to daily trauma and tragedy?

A documentary-style short film following the lives of just such people trying to do their jobs and keep it together.

CAST



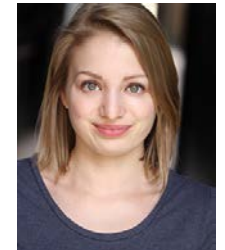
ELLIE-ROSE FOWLER



AMY GILBROOK



RUARIDH MATHIESON

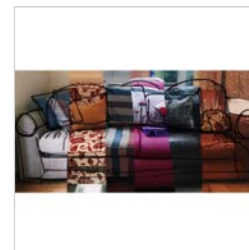


ALICE OLIVER



LEILANI ROGERS

SOFA



Living rooms, kitchens, dinner table talk – when you think of home, what do you hear? Come inside, take a seat on the sofa, close your eyes... And listen.

CAST



OLGA ALAJAASKO



MADELINE BIGGS



NADINE KAUR



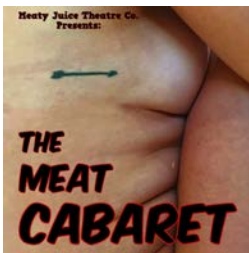
RUARIDH MATHIESON



HIBA MEDINA



ELA PORTNOY



THE MEAT CABARET

The female form. Take a peep around the curtain, I dare you. Where will you look? How do we see ourselves? Who decides how we see each other?

Sit down, grab a drink. There's danger and delight at the Meat Cabaret.

CAST



MADELEINE GORDON



LAWRENCE HARP



ISABELLE WOOLLEY



LIZZIE WOOTTEN



SILVER SPOONS

Hey, you.

When was the last time you were pampered? Had a canape, a spritzer? Well, why don't you come in and make yourself comfortable.

There's fine dining, good wine and highly trained waiters. Take a seat and let our artists' magic wash over you all night...

CAST



ELA PORTNOY



MY FAULT

How can our words make us weak? Why do we avoid confrontation in our professional and personal lives, and what would happen if our agreeability was exposed to others?

When in life do we make agreeableness a priority? A female exploration of sacrificing strength for acceptance.

CAST



HATTIE KEMISH

WHAT'S ON NEXT...

MA ACTING PRESENT:



By W.H. Auden & Christopher Isherwood

26 June 2020 @ 2:30pm